

# V-TUF



## V3.1250N

+

## V3.12100N

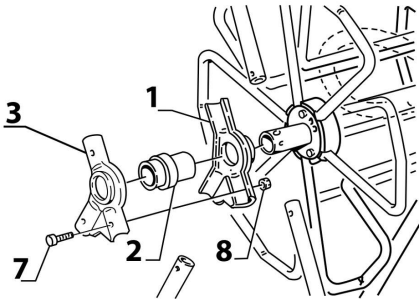
**MANUAL WIND METAL HOSE  
REEL FOR 50M-100M HOSE  
ASSEMBLY INSTRUCTIONS**



Please read this guide before assembling the  
V3.1250N or V3.12100N hose reels

## V3.1250N - 50M Hose Reel Assembly Instructions

### 1. Assembling the right-hand bearing

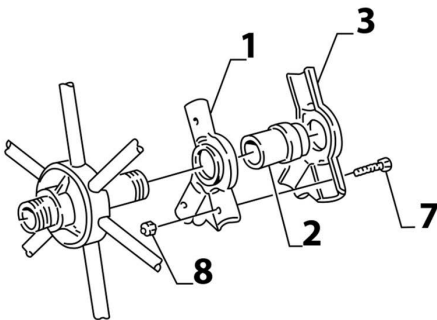


INSERT THE ELEMENT 1 AND THE BEARING 2 ON THE AXLE AS SHOWN IN THE PICTURE.

PLACE THE SUPPORTING TUBES OF THE STRUCTURE AND THE HANDHOLD TUBE.

INSERT THE ELEMENT 3 AND FIX IT USING SCREW 7 AND NUTS 8.

### 2. Assembling the left-hand bearing

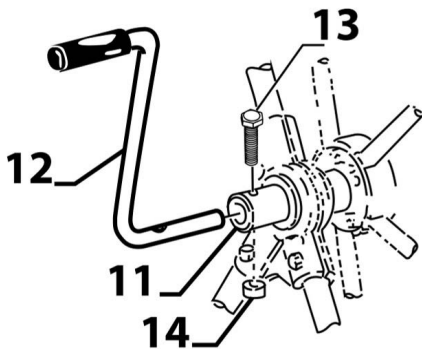


INSERT THE ELEMENT 1 AND THE BEARING 2 ON THE AXLE AS SHOWN IN THE PICTURE.

PLACE THE SUPPORTING TUBES OF THE STRUCTURE AND THE HANDHOLD TUBE.

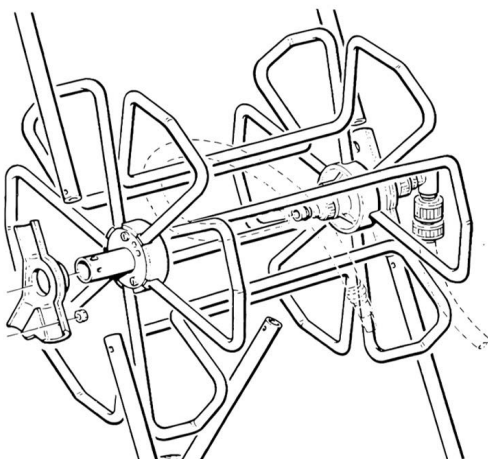
INSERT THE ELEMENT 3 AND FIX IT USING SCREW 7 AND NUTS 8.

### 3. Attaching the handle



INSERT THE HANDLE 12 ON THE RIGHT-HAND END OF THE AXLE 11

AND FIX IT USING THE SCREW 13 AND THE NUT 14.

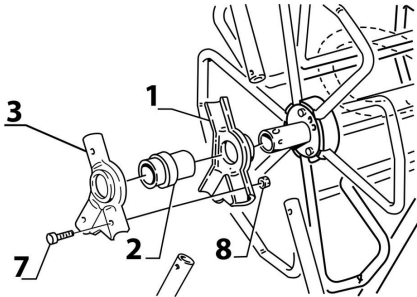


#### V3.1250N 50M HOSE REEL:

- ✓ 50 METRE 1/2" HOSE CAPACITY
- ✓ UNION WITH 3/4" OUTER SCREW CUTTING
- ✓ TUBE DRUM AND STRUCTURAL STEEL TUBE
- ✓ CRANK AND HARDWARE IN TOUGH ZINC-PLATED STEEL
- ✓ MAINTENANCE FREE BEARINGS MADE IN SYNTHETIC MATERIAL
- ✓ 150MM WHEELS IN SYNTHETIC MATERIAL WITH RUBBER BELT

## V3.12100N - 100M Hose Reel Assembly Instructions

### 1. Assembling the right-hand bearing

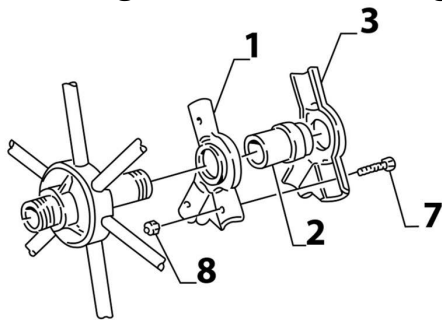


INSERT THE ELEMENT 1 AND THE BEARING 2 ON THE AXLE AS SHOWN IN THE PICTURE.

PLACE THE SUPPORTING TUBES OF THE STRUCTURE AND THE HANDHOLD TUBE.

INSERT THE ELEMENT 3 AND FIX IT USING SCREW 7 AND NUTS 8.

### 2. Assembling the left-hand bearing

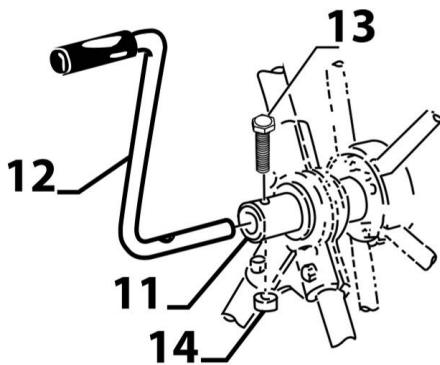


INSERT THE ELEMENT 1 AND THE BEARING 2 ON THE AXLE AS SHOWN IN THE PICTURE.

PLACE THE SUPPORTING TUBES OF THE STRUCTURE AND THE HANDHOLD TUBE.

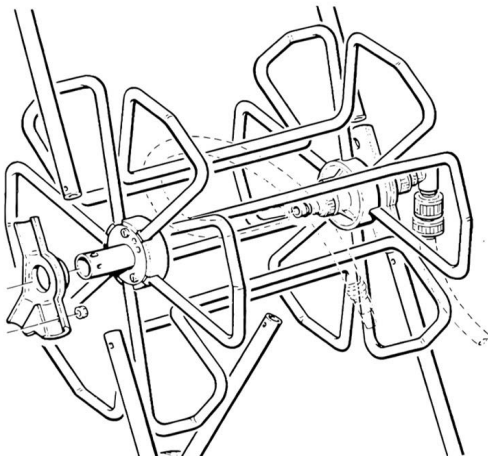
INSERT THE ELEMENT 3 AND FIX IT USING SCREW 7 AND NUTS 8.

### 3. Attaching the handle



INSERT THE HANDLE 12 ON THE RIGHT-HAND END OF THE AXLE 11

AND FIX IT USING THE SCREW 13 AND THE NUT 14.



V3.12100N 100M HOSE REEL:

- ✓ 100 METRE 1/2" HOSE CAPACITY
- ✓ UNION WITH 3/4" OUTER SCREW CUTTING
- ✓ TUBE DRUM AND STRUCTURAL STEEL TUBE
- ✓ CRANK AND HARDWARE IN TOUGH ZINC-PLATED STEEL
- ✓ MAINTENANCE FREE BEARINGS MADE IN SYNTHETIC MATERIAL
- ✓ 200MM WHEELS IN SYNTHETIC MATERIAL WITH RUBBER BELT



[WWW.V-TUF.COM](http://WWW.V-TUF.COM)