

Common wearing and service parts for: V-TUF RAPID SXL STAINLESS STEEL CABINET PRESSURE WASHERS

For models: RAPIDSXL110; RAPIDSXL240; RAPIDSXL415

Note: All ordering codes are in **bold**.

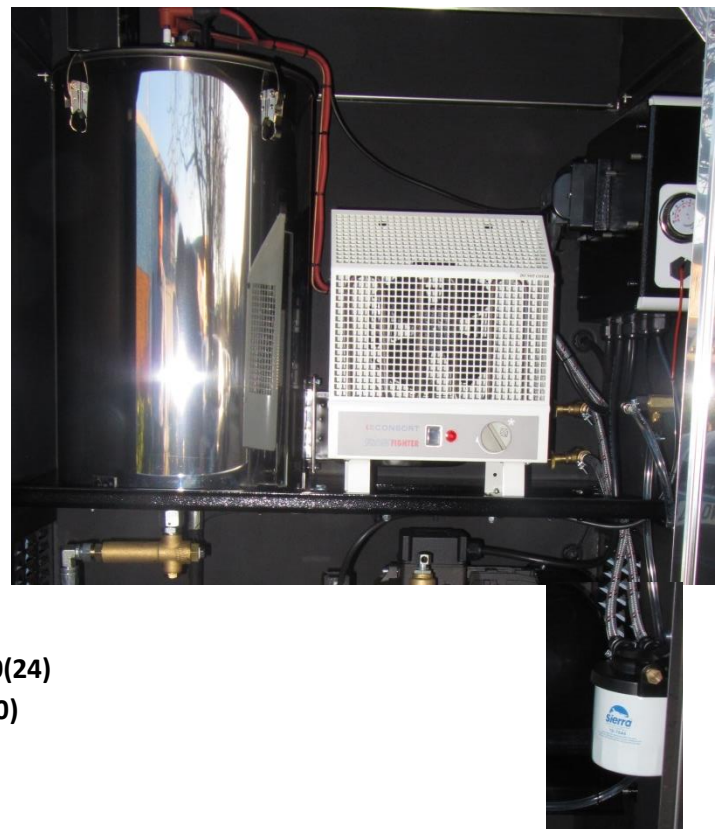


Spray gun, lance, hose and coupling parts

- High Pressure jet (RAPID415) **T15.070J**
- High Pressure jet (240/110) **T15.060J**
- Gun lance unit **GLNKIT8**
- 3/8MM adaptor **MB6**
- 3/8 Dowty seal **W6**
- High pressure hose 10m **VTK251610MM**
- High pressure hose 15m **VTK251615MM**
- High pressure hose 20m **VTK251620MM**
- QR Duraklix coupling male **B14.9110**
- QR Duraklix coupling female **B14.9100**

Burner Parts:

- Fuel Nozzle **T5.1.5045A (HOLLOW)**
- Electrodes **D6.032**
- Electrode cap (x2) **D7.031**
- HT lead /meter **D7.031**
- HT transformer **D5.051**
- Fuel Filter **E3.033**
- Secondary fuel filter **E3.601**
- Flame Sensor (not on 110volt) **VTPS2861**
- Soot Breaker **D1.555**
- Thermostat **19.5110**
- Thermostat housing **10.9119**
- Thermostat housing ret. nut **10.11411**
- Fuel pump Danfoss R3 **D1.025**
- Fuel pump drive set – **D1.100 and D1.101**
- Solenoid coil 24 volt for fuel pump (240/415) **D1.520(24)**
- Solenoid coil 110volt for fuel pump (110) **D1.520(110)**
- Complete Boiler **D0.524**



Electrical and control Parts



- On – off push button switch **I2.021PB**

Common wearing and service parts for: V-TUF RAPID SXL STAINLESS STEEL CABINET PRESSURE WASHERS

For models: RAPIDSXL110; RAPIDSXL240; RAPIDSXL415

Note: All ordering codes are in **bold**.



- Rotary Burner on off switch **I2.022R**
- Fuses (110volt) **I5.010**



- Chemical valve **B18.1101**
- Inline chemical flow regulator **C5.010**

Lubrication:

- Pump oil/lubrication (500ml) **PL100**

High pressure Parts:

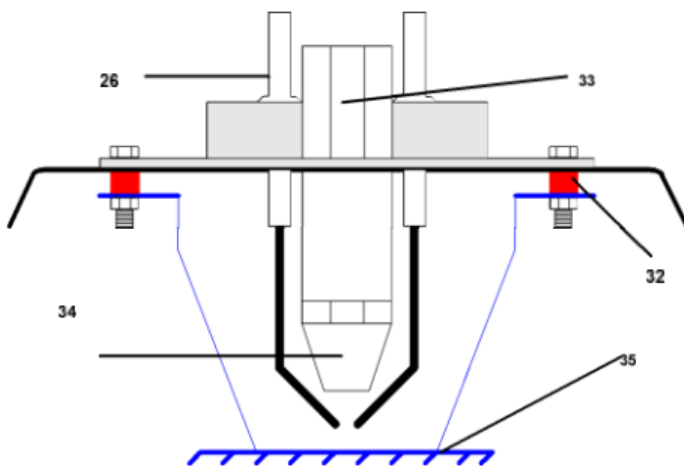
- Unloader valve **K5.1**
- High pressure pump (415volt) **XHDM400SS**
- High seal kit for pump (415volt)

XHDM400HSK

- Pressure switch **C0.040M14**
- Pressure switch bush **MFB06/04**
- 550mm ARMoured BY-PASS HOSE 3/4F x 3/8M **BF11205534FM**



Burner configuration:



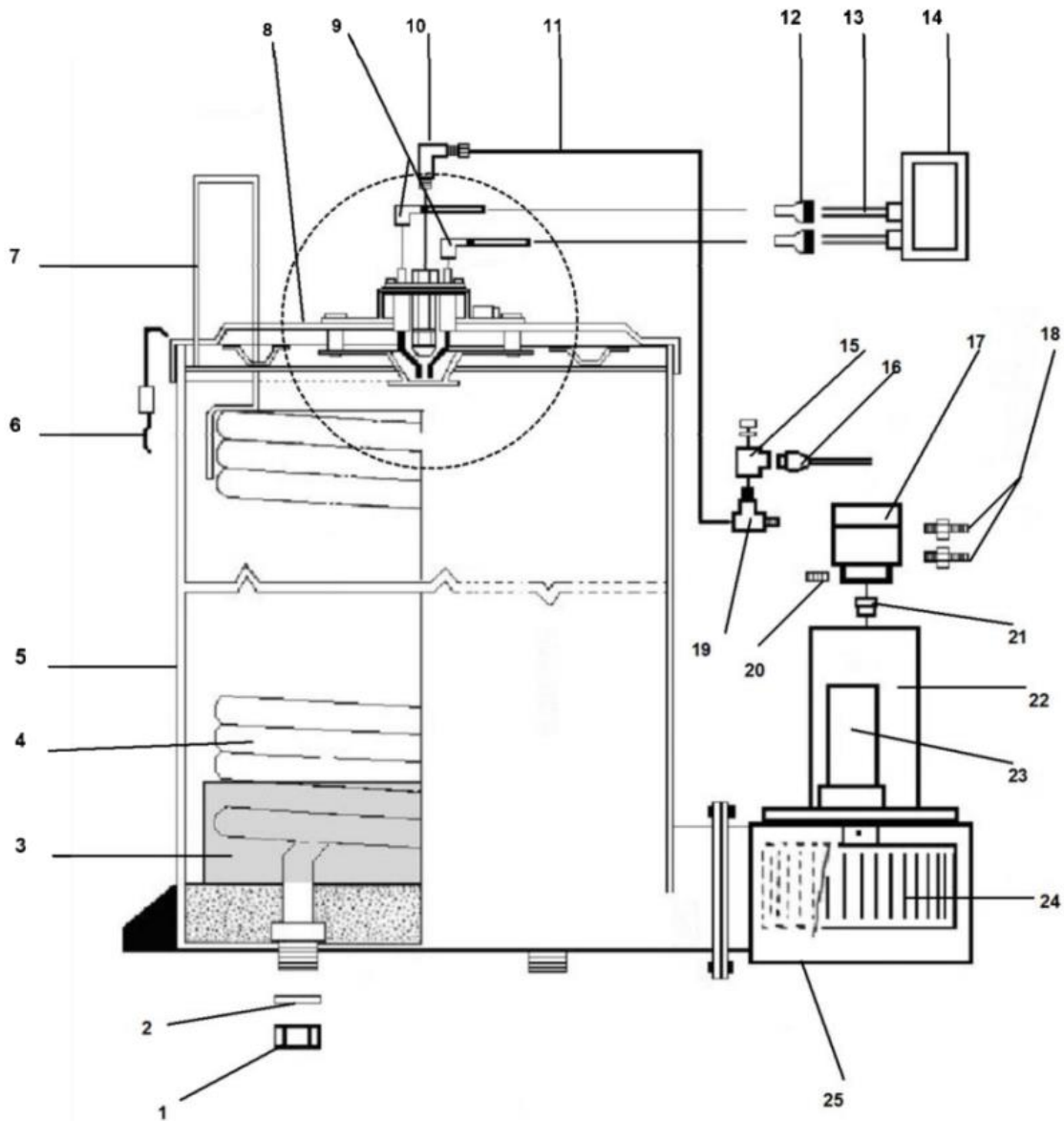
Common wearing and service parts for: V-TUF RAPID SXL STAINLESS STEEL CABINET PRESSURE WASHERS

For models: RAPIDSXL110; RAPIDSXL240; RAPIDSXL415

Note: All ordering codes are in **bold>.**



Boiler configuration:



Common wearing and service parts for: V-TUF RAPID SXL STAINLESS STEEL CABINET PRESSURE WASHERS

For models: RAPIDSXL110; RAPIDSXL240; RAPIDSXL415

Note: All ordering codes are in **bold**.



Service Intervals

The V-TUF Service Plan is based on 4 monthly service intervals, but for machines subject to abnormal workloads it should be based on every 300 Hours.

Service – Hot and Cold Water Machine

On a Service all the following items are checked, adjusted or replaced as necessary.

Cold water

Check mains lead and plug, if damage is found, replace before Commencing.

- Replace pump oil
- Remove all water filters and clean.
- Check pressure pump for correct operation.
- Check detergent system for correct calibration and air leaks.
- Check by-pass valve for correct operation and adjust as necessary.
- Check all electrical connections, re-tighten and pull test.
- Check all High Pressure hoses for external wear, kinks, cuts and abrasions
- Run test the machine and check thoroughly that there are no leaks
- Check the overall machine timer times out correctly (2 Min)
- Check heater, and frost stat on frost protection system for correct operation (If fitted)
- Check fire valves on fuel system for correct operation (External fuel connection only)

Hot water (additional)

- Replace in line fuel filter.
- Clean and check the burner unit and adjust fuel pressure as necessary.
- Check electrodes for signs of arcing check gaps and replace / re-set as necessary
- Check lance, gun and hose for damage and leaks and replace nozzle jet.
- Check burner purge at 3-4 seconds minimum

Run and test the machine.

The following parts should be replaced at every service interval

Fuel Filter Burner Nozzle Nozzle Jet on Lance Pump Oil

For any parts that are not shown, please contact 01522 787978 or sales@fencogroup.com