

SPECIFICATION SHEET

MODEL/STYLE: VT4

DESCRIPTION: **1400 RPM High pressure pump with reduction gearbox kit with 1" (25,4mm) female shaft.**

Other parts normally included (unless ordered without): Banjo Type unloader valve with chemical injection (p/n: C0.194); Water inlet filter, ½" M Thermal relief valve (p/n: C2.012)

PICTURES:



Please note: This product is normally shipped without lubricant. Check that the lubricant of this unit is at the correct level before use, otherwise serious damage will occur. Change the pump & gearbox lubricant after the first 300 working hours.

Recommended Lubricant: X-TRA PRESSURE LUBE PL100. PL100 prolongs pump life and transmission lubrication when pump seals wear.

SPECIFICATIONS:

Maximum pressure: 250 bar/ 3600 PSI

Maximum input pressure: 10 bar

Maximum water flow: 15 litres per minute.

Plunger type: Ceramic

Pump inlet port: ½" F

Pump outlet (High pressure) port: 3/8 F

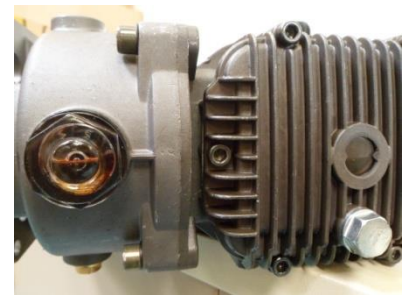
Unloader inlet ½" male

Unloader outlet: 3/8" F or (with chemical injector: mid size QR female)

Male QR fitting (not supplied): QR male x 3/8 F part number: B14.9191

Pump head: Brass

For use on: Horizontal shaft 8 – 13HP engines with 1" male shaft.



Lubricant levels FIG. 5

Important instructions:

1. Only water must pass through this pump.
2. Always ensure all the pump mounting bolts are tight.
3. Ensure pump lubricant and gearbox lubricant levels are correct. Always use the correct lubricant, and do not over fill.
4. Adjust the unloader (pressure regulator) valve to minimum pressure (FIG 4)

SPECIFICATION SHEET

5. Initially prime the pump at low pressure
6. Adjust the pressure regulator. The pressure must not exceed the maximum pressure of the pump (See specifications). The maximum pressure locking nut must be set and secured. (FIG 4)
7. Before any maintenance to the pump unit, the pressure must be zero.
8. The pump must always have sufficient water supply, there must be no air leaks on the suction line and filters (FIG 3) must kept clean. Serious damage will result if this is not ensured.
9. The pump must not be left running without water or for more than 7 minutes on bypass.
10. Protect the pump unit from Frost.
11. Do not run, if the pump is making unusual noises.

Please note:

- All data and measurements are without liability and indicate approximate values only.
- We reserve the right to make technical modifications at an time without prior notification
- The details we provide are recommendations only, which we give to the best of our knowledge.
- A copy of our full terms and conditions can be obtained on request.

DEALER:

Please make a note where you purchased this product from, as it could be of use at a later stage.

SERVICE KITS:

[C0.194KIT2 \(UNLOADER & INLET FILTER KIT\)](#)

[VTPS4003 \(Valve kit\)](#)

[VTPS4001 \(Water Seals\)](#)

[VTPS4002 \(Plunger oil seal kit\) - 18mm](#)

[PL500 \(Pump oil\)](#) x 2 (Please note: oil level in pump and gearbox must be kept topped up)