



MAMMOTH STAINLESS

Heavy Duty Industrial Wet & Dry Vacuum Cleaner

OPERATOR MANUAL



Please read this manual before using the MAMMOTH STAINLESS

All Errors & Omissions Excused – Specification May Change Without Notice – Please Refer To www.v-tuf.co.uk For the Latest Version

CONTENTS

| Contents | Page |
|---------------------------|-------------|
| Identification Data | 3 |
| Safety Instructions | 4-5 |
| Mammoth Stainless Diagram | 6-9 |

TECHNICAL DATA:**Industrial Specification - MAMMOTH STAINLESS**

| | MAMMOTH110-STAINLESS | MAMMOTH240-STAINLESS |
|--|-----------------------------|-----------------------------|
| NOISE - DB - TESTED FROM 2 METERS | 78 | 86 |
| in warehouse environment | | |
| NOISE - DB - TESTED FROM 3 METERS- | 75 | 85 |
| in warehouse environment | | |
| TANK CAPACITY - (LITRES) | 80 | 80 |
| WET CAPACITY - (LITRES) | 54 | 54 |
| DRY CAPACITY - (LITRES) | 65 | 65 |
| HOSE ID - MM | 38 | 38 |
| AIR FLOW | 60 CFM | 86 CFM |
| AIR FLOW L/SEC (PER MOTOR) | 28 CFM | 41 CFM |
| AIR VELOCITY (M/SEC) | 25 | 36 |
| PRODUCT WEIGHT (without accessories) kg | 27 | 27 |
| PACKED WEIGHT (including accessories) - kg | 33 | 33 |
| DIMENSIONS (L x W x H mm) | 640 x 620 x 1010 | 640 x 620 x 1010 |
| PACKAGING (L x W x H cm) | 660 x 640 x 1060 | 660 x 640 x 1060 |

Safety Instructions

These instructions are for the user's safety, and all users of the V-TUF cleaning equipment should ensure to have read this literature before using the machine.

Do not use with a damaged cable.

- Do not run over the cable.
- Should be inaccessible for children and pets.
- Do not use in the presence of flammable gasses.
- Do not clean up any hot material, e.g. ash.
- Always turn off the machine, and then unplug it, before you service the machine.
- **Do NOT use this machine without the filter INCLUDED**
 - The original motor protection filter (21) can be used for wet & dry suction, but it must be stored outside the vacuum to dry before being used again. If this is problem order a spare filter (VTVS021) and alternate the use. See Motor Protection Filter & Exhaust Filter
 - IMPORTANT! The filter (21) provided with this machine will be suitable for most applications; however in some applications the filtration level will be insufficient. V-TUF will not accept responsibility for damage to the machine or to the user due to insufficient levels of filtration for the application. In an application where large volumes of water are being sucked up, we recommend you use the wet-only filter FLT02 (purchased separately). If it is an application where fine dust is being sucked up, we recommend you use the dry-only filter VTVS086 + VTVS087 (purchased separately).

All repairs on V-TUF products should be done by a V-TUF service representative.

- If the machine shuts down, be sure to turn off the machine and unplug it before troubleshooting.
- For safety, the machine contains an electronic overload protection.
- Always turn off and unplug the machine when it is not in use.

- If any part of the appliance becomes damaged or fractured, it must be replaced by a V-TUF engineer.

Operating Instructions

All V-TUF Products should arrive to the consumer as ready to use immediately. Simply, plug in to the mains outlet, then start the machine by moving the on/off switch to the 'on' position.

Motor Protection Filter & Exhaust Filter

The motor protection filter (21) is only accessible by removing the vacuum head. Lift the motor protection filter up by the bracket. When replacing the motor protection filter make sure that it is pressed in position tightly. The motor protection filter will protect the motors when vacuuming wet & dry material.

If the motor protection filter (fig 21) is used for wet suction. It must be stored outside the vacuum to dry before being used again. If this is problem order a spare filter (21. Dust screen) and alternate the use. This filter should be cleaned when it is dirty.

Motor Protection filters:



VTVS8021 (FIG.21) Dust Screen



VTVS7020L WET only filter

For WET ONLY use the Machine is supplied with the

Change the exhaust filter at the same time as the motor protection filter. To do this, carefully remove the filter retaining rings and put them to the side. Next pull the enforcement strips of the exhaust filter out of the housing slot and remove the exhaust filter from the housing.

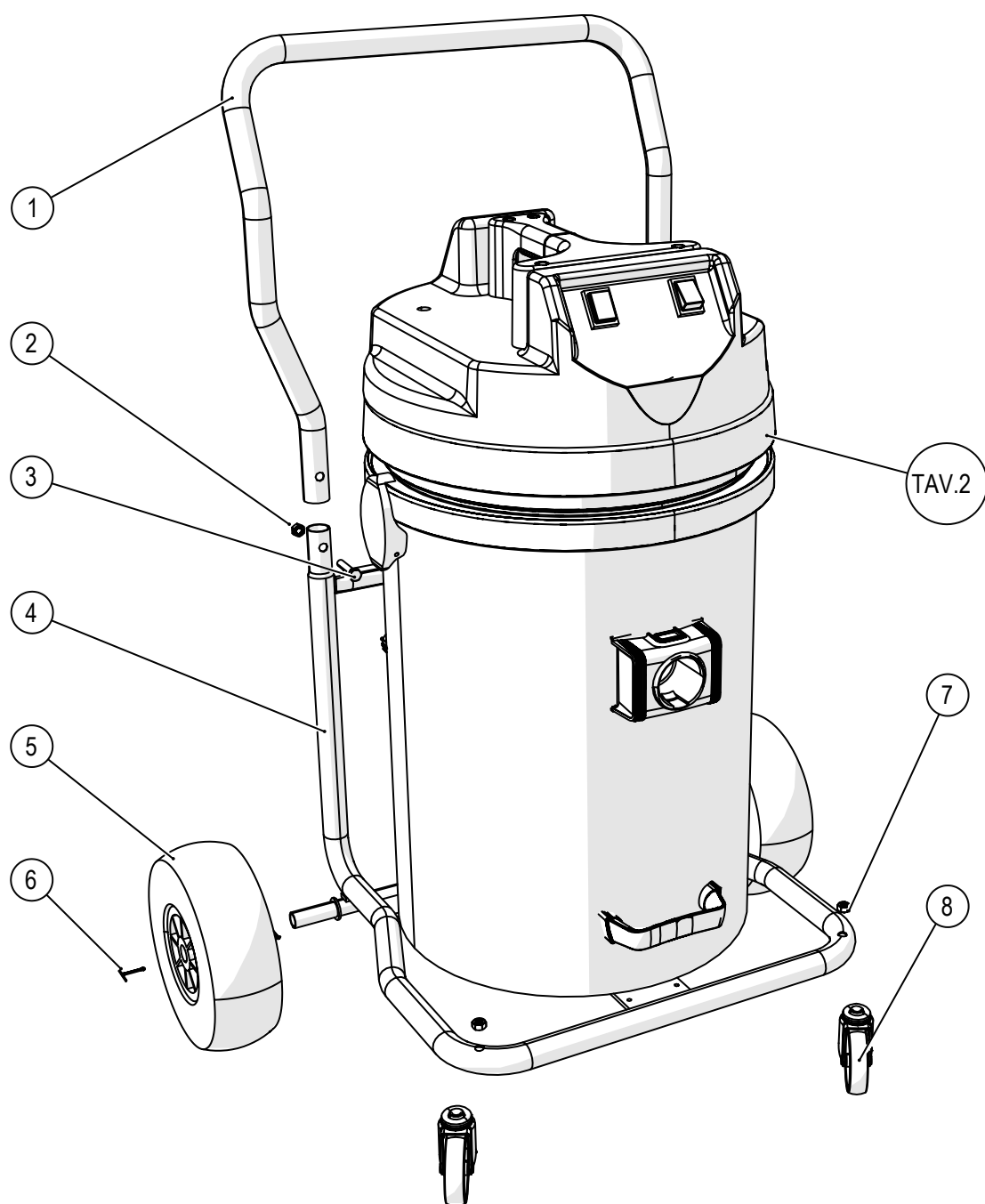
When reassembling, please ensure the exhaust filter is fitted correctly in the housing slots and the filter retaining rings are installed correctly.

Only use genuine V-TUF replacements on the appliance. V-TUF will not accept responsibility for damage to the machine or to the user due to insufficient levels of filtration for the application.

Accessories



MAMMOTH STAINLESS

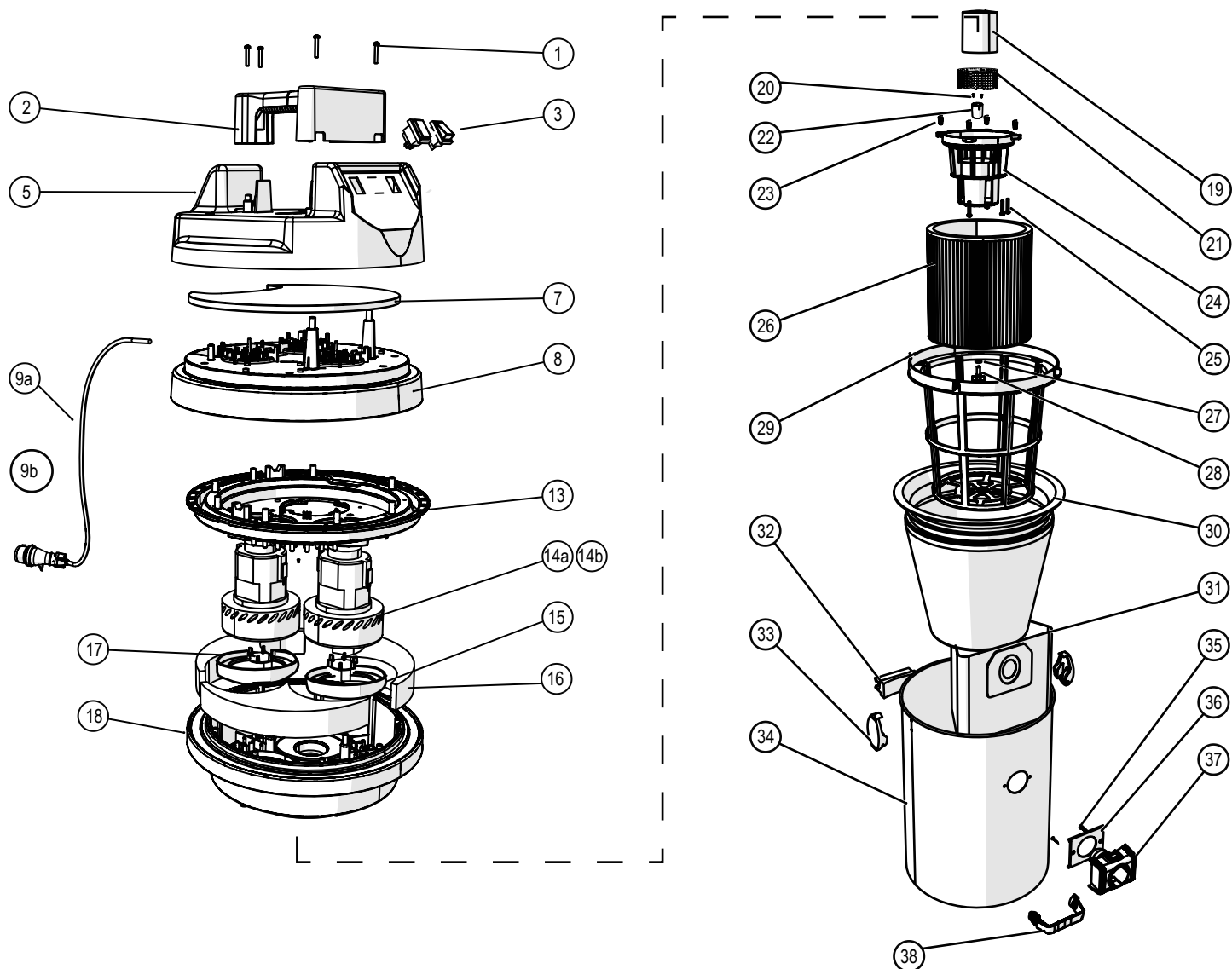


MAMMOTH STAINLESS

METAL TROLLEY

| Pos. | Cod. | Q.ty | Description |
|------|------------|------|------------------------------------|
| 1 | VTVS8150 | 1 | METAL TROLLEY (PART A) |
| 2 | VTVS8151 | 2 | CLOSED LOCK NUT M10 |
| 3 | VTVS8152 | 2 | HEXAGONAL HEAD METRIC SCREW M10X40 |
| 4 | VTVS8159 | 1 | METAL TROLLEY (PART B) |
| 5 | VTVS0245T | 2 | WHEEL Ø260MM |
| 6 | VTVS8154 | 2 | STAINLESS STEEL PIN Ø29X40MM |
| 7 | VTVS8151 | 2 | CLOSED LOCK NUT M10 |
| 8 | VTVS023MST | 2 | WHEEL Ø100MM |

MAMMOTH STAINLESS



MAMMOTH STAINLESS

| Pos. | Cod. | Q.ty | Description |
|------|--|------|---|
| 1 | VTVS7513 | 4 | SELF TIPPING SCREW 5X30 ZN |
| 2 | VTVS8100 | 1 | HANDLE E.2 L=229MM |
| 3 | VTVS7422Y | 2 | RED LIGHT SWITCH 2P |
| 5 | VTVS8102 | 1 | BLACK COVER Ø440 WITH 2 HOLES |
| 7 | VTVS8104 | 1 | FOAM NOISE Ø370 E.2 |
| 8 | VTVS8105 | 1 | BLACK MOTOR COVER Ø452 |
| 9a | I10. 1505C- 110V Cord + Plug | 1 | POWER CORD H05 2X1,5MMQ 110V |
| 9b | I10. 1605C- 240V Cord + Plug | | |
| 13 | VTVS8108 | 1 | BLACK MOTOR HOLDER Ø444 |
| 14 | a. VTVS 7826 - 110V Motor b. VTVS 7825 - 240V Motor | 2 | DOUBLE STAGE MOTOR |
| 15 | VTVS8109 | 2 | "L"GASKET S/F H=8 |
| 16 | VTVS8110 | 3 | SOUND ASSORBENT TRIANGLE |
| 17 | VTVS8111 | 2 | AUTOMATIC VALVE Ø50 |
| 18 | VTVS8112 | 1 | YELLOW MOTOR BASE Ø452 WITH HOLE FO VBR |
| 19 | VTVS8113 | 1 | FLOAT Ø80 |
| 20 | VTVS8114 | 2 | SELF TIPPING SCREW 2.9X19 ZB |
| 21 | VTVS8115 | 1 | METAL GRID Ø92MM H54MM |
| 22 | VTVS8116 | 1 | VIBRATOR SPACER H30MM |
| 23 | VTVS8117 | 4 | SPRING H12MM |
| 24 | VTVS8118 | 1 | FLOAT SUPPORTING Ø168 |
| 25 | VTVS7512 | 4 | SELF TIPPING SCREW5X25 TC ZN |
| 26 | VTVS8022 | 1 | HEPA CARTRIDGE FILTER Ø250 H178 |
| 27 | VTVS8119 | 1 | GASKET NBR 15X7, 8X2 MM (optional extras)* |
| 28 | VTVS8120 | 1 | CARTRIDGE WINGNUT M8X20 (optional extras)* |
| 29 | VTVS8121 | 1 | FILTER BASKET Ø252 |
| 30 | VTVS8021 | 1 | POLYESTER FILTER WITH RING Ø44 (optional extras)* |
| 31 | VTVS055 | 5 | POLYESTER BAG (optional extras)* |
| 32 | VTVS8122 | 1 | TANK ROLLO HINGE Ø25 |
| 33 | VTVS7491 | 2 | COMPLETE SPRING HOOK BLACK |
| 34 | VTVS8124 | 1 | STAINLESS STEEL TANK H=580 |
| 35 | VTVS7512 | 2 | SELF TIPPING SCREW 5X25 TCZN |
| 36 | VTVS7164 | 1 | GASKET INLET Ø48 |
| 37 | VTVS7165m | 1 | INLET Ø48 |
| 38 | VTVS8125 | 1 | COMPLETE HANDLE 120MM |

*optional extras – Not included with the basic machine



www.V-TUF.COM